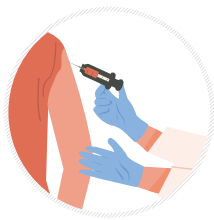


MIND THE GAP

Safe Management Measures at Dine-in F&B Establishments (excluding Hawker Centres and Coffee Shops) (Effective from 10 August 2021)

Dine-in groups of up to 5 persons are allowed if:

1 All diners



are fully vaccinated

(i.e. 2 weeks after receiving the Pfizer-BioNTech/Comirnaty or Moderna vaccines or after completing the full regimen of vaccines on the World Health Organisation's Emergency Use Listing including the appropriate duration post-vaccination for the vaccine to be effective)

or



have recovered from a COVID-19 infection

with a valid Pre-Event Testing (PET) exemption notice for the duration of his/her dining-in

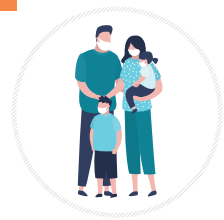
or



have valid negative COVID-19 test results

[Antigen Rapid Test (ART) or Polymerase Chain Reaction (PCR) from an MOH-approved COVID-19 test provider within the last 24 hours]

2



Children aged 12 or below (i.e. born in or after 2009)

are from the same household

(do not need to be accompanied)

Individuals aged 13 or above who do not meet the first criteria are not allowed to dine-in at F&B establishments except for hawker centres and coffee shops

To offer dine-in, F&B establishments have to:



Appoint designated employee
to conduct relevant checks

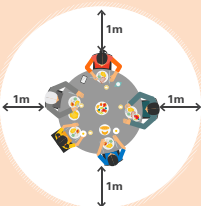


Conduct checks

≥ 13 years old

- **Verify vaccination status***
- **Verify PET exemption notice**
- **Verify valid negative COVID-19 ART or PCR***

*Through the SafeEntry (Business) app or via customers' TraceTogether/HealthHub app



Limit each table/group to 5 or fewer persons, with at least 1m spacing between groups

Distance measured between every group (of up to 5 persons) or person, and between the backs or legs of chairs used by diners



No sale and consumption of alcohol after 10.30pm



No singing, background music or any public entertainment

(e.g. live music, radio broadcast, TV/video screenings, karaoke, gaming)

Government agencies will step up enforcement on F&B establishments and take firm action against any breaches.



For more information, visit

enterprisesg.gov.sg/covid-19/safe-distance



**Enterprise
Singapore**